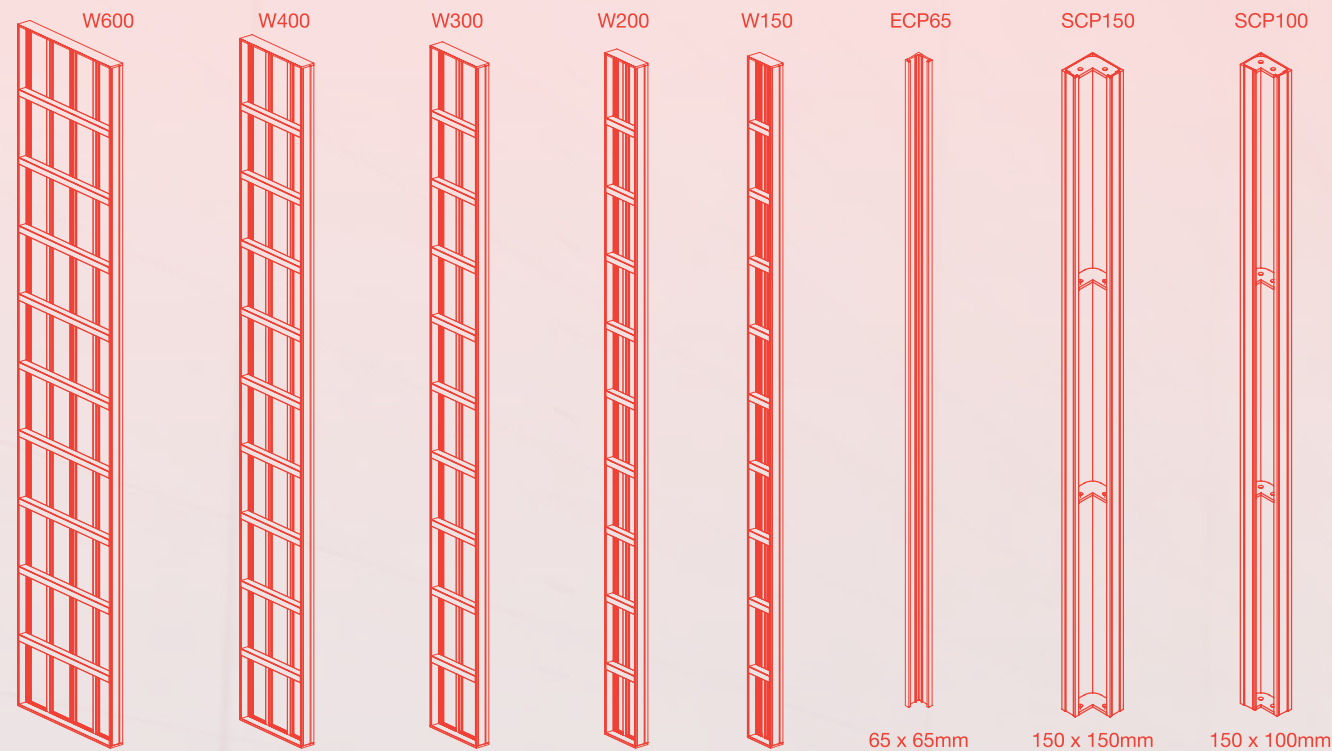


Specifications

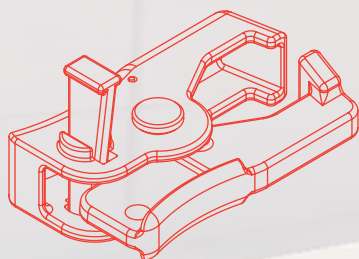
SGF Formwork Panels



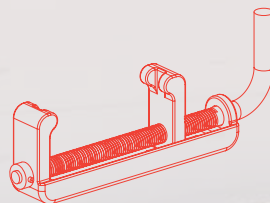
Width Code	W600	W400	W300	W200	W150	ECP65	SCP100	SCP150
Standard Width (mm)	600	400	300	200	150	65	100	150

* Optional Size: Any custom made dimensions available. * Standard Heights ranges from 300 – 3000mm.

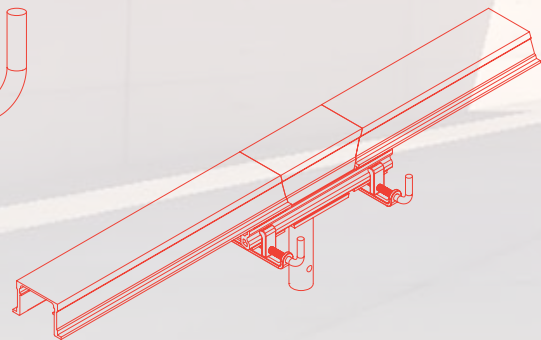
SGF Fastener (HF130)



Beam Fastener (BF11)

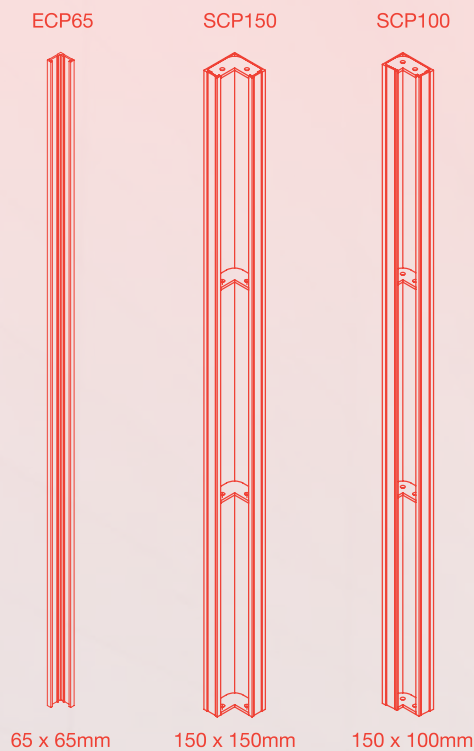


Early Striking Beam Structure



* Continuous improvement of products is a LEADER's policy, product specifications are subject to change without obligations.

SGF Corner Panels



Hong Kong Sole Agent :
AVION ACCESS CO. LTD.
 1D Fung Yip Ind. Bldg., 170 Wai Yip St.,
 Kwun Tong, Kowloon, H.K.
 Tel : (852) 2744 2111
 Fax : (852) 2796 2882
 info@avion.com.hk www.avion.com.hk

Factory :
Guangzhou Leader Equipment Ltd.
 Dongfeng Industrial Park, Tanbu Town,
 Huadu District, Guangzhou.
 Post Code 510820, China.
 Tel : (86) 20 8674 7299
 Fax : (86) 20 8674 1177
 www.leader-lift.com / www.leaderlift.cn

Distributor :

© Leader All Rights Reserved.

LEADER 易達®

NEW TECHNOLOGY FOR A NEW ERA



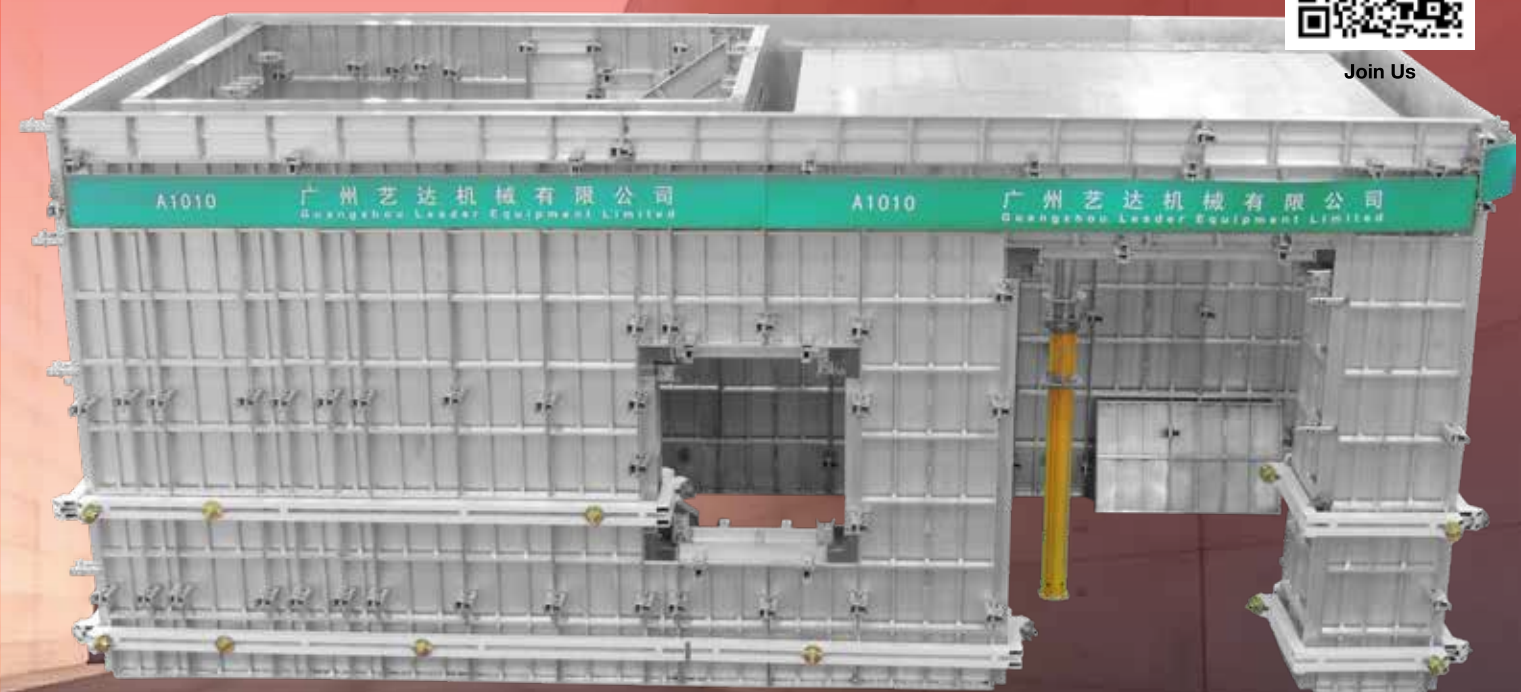
SUPERB FORMWORK SYSTEM

Patent No. ZL2014 1 0538517.6 Patent No. ZL2015 2 0254694.1
 Global PCT Registration No. PCT/CN2014/089033 All Rights Reserved. Copy Prohibited.

WWW.LEADERLIFT.CN



Join Us



* The System only uses one unique patent Handy Fastener with Numerous Life Cycle capable tightening the Wall & Slab Panels reliably. Simple stable rapid self assembling & dismantling procedures.

Prominent Features

- * Innovated Design for New Era
- * Sturdy, Safe, Light & Easy Logistic
- * Formwork Panels Handy Fastener Usage, simple Assemble & Dismantle
- * Smart Drophead, Low Cost & Efficient
- * Formwork Panels reuse 300~500 times
- * Handy Fastener reuse 2000~5000 times Minimal Wear & Tear, Highly cut cost

SUPERB FORMWORK SYSTEM

NEW ELEMENTS IN CITY

CONCRETING ARCHITECTURE



LEADER Superb Formwork System is an innovated integrated Forming and Shoring System made of light weight strong aluminium, utilizing LEADER's unique design Handy SGF Fastener enable reliable tight connections of formwork panels, suitable for Rapid Solutions in Monolithic / Multiple Concreting for complex construction geometry.

Patent SGF Handy Fastener

Patent Design Fast Grip Technology accelerate the process of Assembling and Dismantling. Much faster than the integrated pins and wedges locking or wedge coupling connection methods.

SGF Fastener Simple Installation

RAPID >>> HANDY >>> EASY >>> SAFE >>> EFFICIENT >>> DURABLE



Press Fastener open to fix on the grooves of the Formwork Panels.



Simply Hammer the Wedge to grip tightly on to the Formwork Panels.

Fabulous Operation Vantage Features

- * Ideal for Monolithic / Multiple Concreting and 1st Choice for live efficient concrete pouring.
- * Smooth Panel Surface complies Class 5 Concrete Standard.
- * Panel Walls could be lifted up entirely without deformations.
- * Large Fastening Position enable much higher efficient Grip Connectors compare to Pin Connection.
- * Stiffener Design allow Panels to sustain concrete pressure up to 60kN/m².
- * Panels use up to 300~500times under proper utilization.
- * Fastener durable reuses up to 2000~5000 times.
- * Formwork Panels could be tailor made to match most construction requirement.

Patented Design & International Awards

LEADER has acquired many innovative Design Patents on the following categories; Aluminium and Steel Scaffolding, Fiberglass Scaffold, Aluminium Prop & Panel Slab Formwork System and also this innovative revolutionary Aluminium Superb Formwork System. The New Superb Formwork System patent design creates a new era for formwork.

LEADER's enterprise has won numerous awards such as the Little Giant Award Innovative Technology Award. LEADER's Factory achieved certification with ISO 9001 International Quality Management Standard to ensure all supplied products are in perfect and reliable quality.



Patent Early Striking Beam Fastener

The Patent Early Striking Fastener & System allows removal of beam & slab formwork panels to be transferred to next floor for usage while retaining the shoring on the same floor. Contractors provide only minimum formwork for 1 storey with 3 storeys of props enough to satisfy the dismantling schedule by earlier striking after each concrete pour to acquire highest cost effectiveness.



China Patent Registration
Global PCT Registration
All Rights Reserved. Copy Prohibited.